

## Specifications

### OPERATION

- Lever style handle with temperature indicator on the escutcheon
- Handle operates upward through a 23° arc. The rotation angle of temperature is 100°. Maximum hot through 50° in clockwise direction. Minimum cold through 50° in counterclockwise
- Adjustable temperature limit stop to control maximum hot water temperature
- Pressure balancing mechanism maintains selected discharge temperature to  $\pm 3.6^{\circ}\text{F} (\pm 2^{\circ}\text{C})$

### FLOW

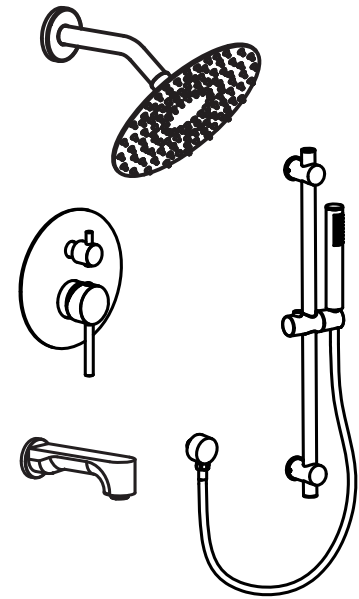
- Showerhead is limited to 1.8gpm(6.8L/min) at 60psi
- Hand shower is limited to 2.5gpm(9.5L/min) at 80psi
- Bathtub spout is minimum to 2.4gpm(9.0L/min) at 20psi

### CARTRIDGE

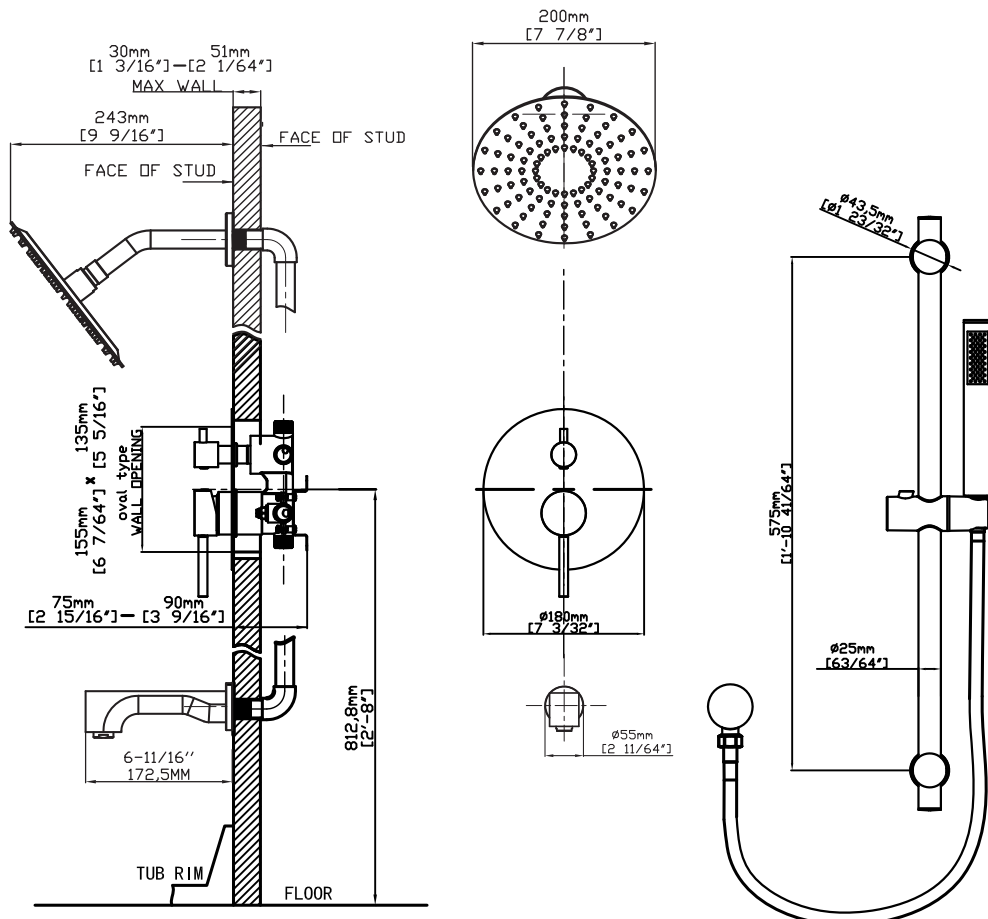
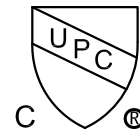
- Pressure Balance cartridge

### STANDARDS

- Third party certified to meet ASME A112.18.1 all applicable requirements referenced therein



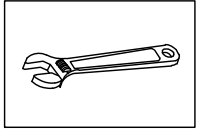
Concealed Shower Set



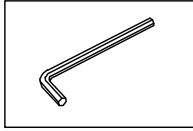
Note: Dimensions are for reference only. Detailed information is in accordance with the final product.

# Concealed Shower Set Installation

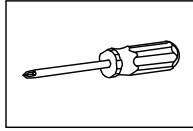
## INSTALLATION MANUAL Tools You Will Need :



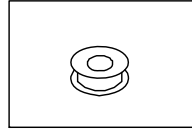
Adjustable wrench



Hexagon wrench



Philips Screwdriver

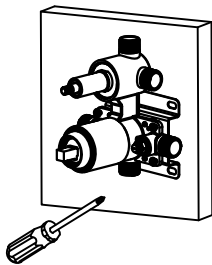


Pipe Tape

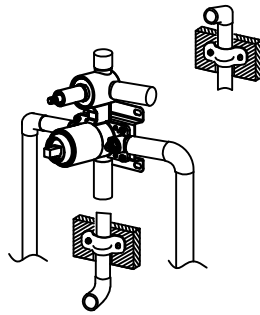
### Notes before installation :

1. Please check that all components are present.
2. Before installation ensure that all feed lines are clear of debris and the on/off valve is present.
3. Ensure water pressure is between 20-125 PSI (includes combination of hot and cold feed lines).
4. Pictures in the manual may not represent exact purchased product. If you are having difficulties please contact a professional plumber.
5. Shut off the main water supply if you will be away from home for an extended period.
6. Rinse all water pipes before installation to insure no impurities remain inside.
7. When welding the shower valve to the water pipe, take out the cartridge and any seals in the valve. When welding is complete, wait for body of the valve to cool down, then re-install the cartridge and the seal parts.
8. A force of 11-13 N.m is needed to securely lock the cartridge.

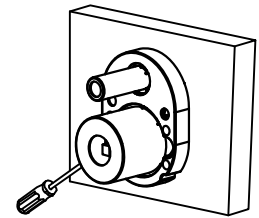
**⚠ All valves have to passed air and pressure testing before shipment. If you wish to request pressure testing before installation, it must be through a professionally licensed plumber and air pressure must not exceed 125 PSI.**



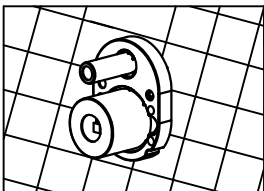
1. Confirm the installed place of the pressure balance valve and fixed on the wood block .



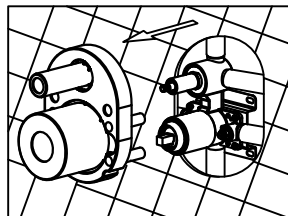
2. Connect the hot&cold inlet tube and outlet tube, then make sure the tube fix stable on the wooden wall.



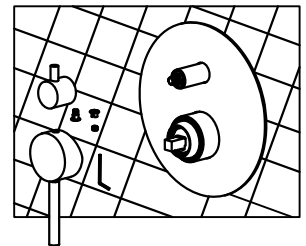
3. Lock the install protective cover into the body. ( 155\*135mm oval type).



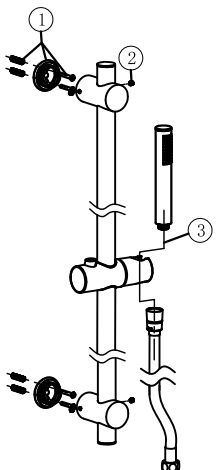
4. Cut the size of the tile hole according to the size and shape of the protected cover ( about 5mm bigger than the protected cover from each side ) . And please put the tile outside the wooden wall .



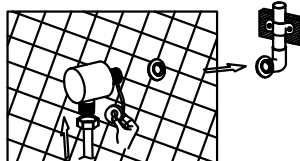
5. Loosen the screw and remove protect cover.



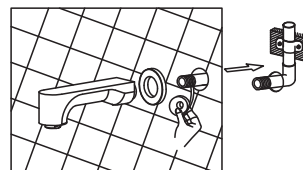
6. Lock the face plate into the body and cling to the wall. Put on the handle, then tighten the screw.



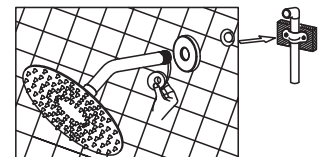
7. ①. Use tapping screw to fix holder on the wall.  
②. Fixed the hex screw.  
③. Connect the hose with hand shower, the other outside Insert connector to the pipe which outside the wall.



8. Insert the connector to the pipe which outside the wall, the other outside hole connect the hose with hand shower.



9. Wrap the thread of spout with teflon tape (ensure it must wrap clockwise). Screw-in to the inlet pipe inside the wall, then install the decorative cover on the wall clingy.



10. Install the shower arm, shower head and flange to the fitting. (stick to the wall) . Tighten the showerhead to the shower arm with the pipe tape. (Make sure the pipe tape with clockwise direction) .